



MONTHLY MEMBERSHIP PROGRESS REPORT

District 26 M3

Results as of: 5/31/2014

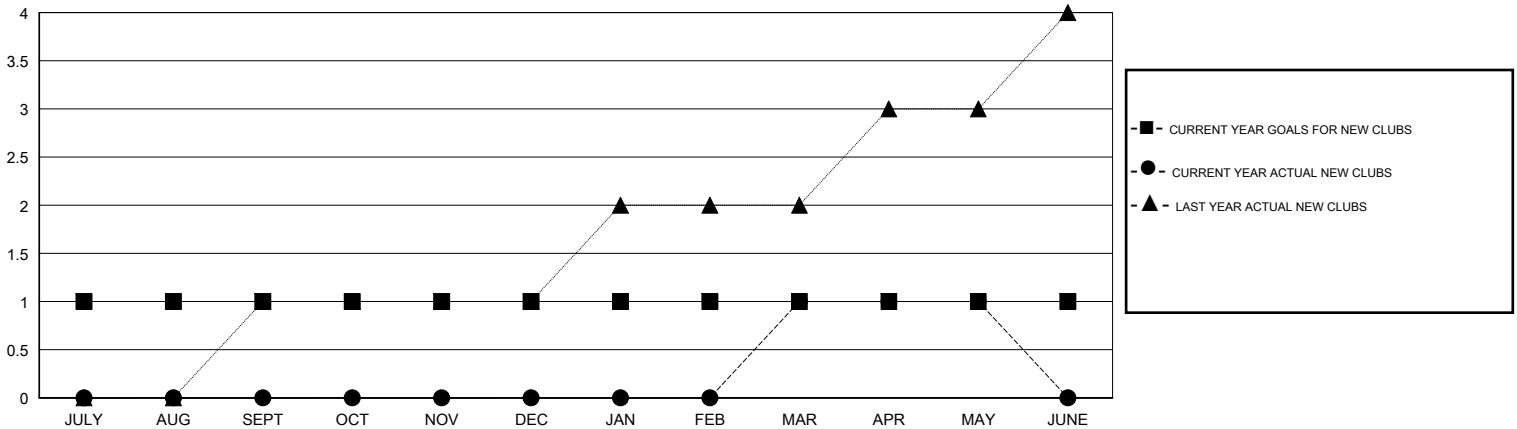
GMT: HAL GRIFFIN

LOCATION MISSOURI

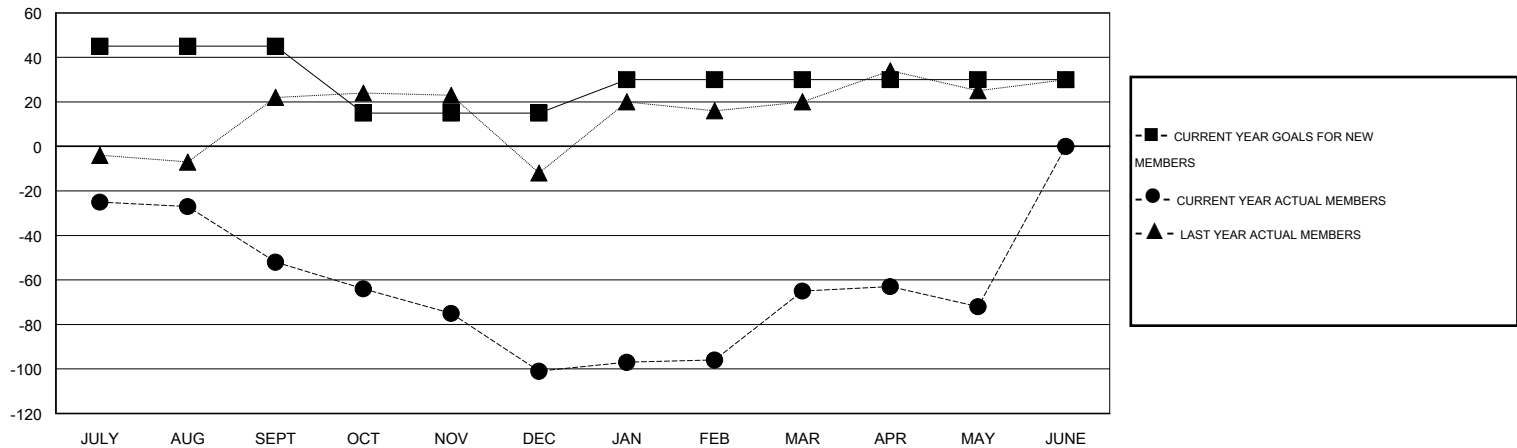
GMT CA 1

Clubs					Members				
RESULTS FOR 2013-2014					RESULTS FOR 2013-2014				
QUARTER	NEW CLUB GOAL	ACTUAL NEW CLUBS	ACTUAL DROPPED CLUBS	ACTUAL NET GAIN/LOSS	QUARTER	NEW MEMBER GOAL	ACTUAL TOTAL MEMBERS ADDED	ACTUAL DROPPED MEMBERS	ACTUAL NET GAIN/LOSS
JULY/AUG/SEPT	1	0	2	-2	JULY/AUG/SEPT	45	30	82	-52
OCT/NOV/DEC	0	0	2	-2	OCT/NOV/DEC	-30	35	84	-49
JAN/FEB/MAR	0	1	0	1	JAN/FEB/MAR	15	56	20	36
APR/MAY/JUNE	0	0	0	0	APR/MAY/JUNE	0	21	28	-7

GOALS AND ACTUAL NEW CLUBS CUMULATIVE



GOALS AND ACTUAL MEMBERS CUMULATIVE



DROPPED CLUBS: 4	37 CLUBS OF 64 ADDED 1 OR MORE NEW MEMBERS	<u>GENDER DISTRIBUTION</u>	
<u>DROPPED MEMBERS</u>		MALE	1,142 (77.21%)
DECEASED	CLICK HERE FOR HEALTH ASSESSMENT DATA	FEMALE	337 (22.79%)
CLUB CANCELLED		FAMILY UNIT MEMBERS	128
OTHER		HEAD OF HOUSEHOLD	61
TOTAL		NON-HEAD OF HOUSEHOLD	67